



Certificate of Analysis

Powered by Confident Cannabis

CFH, Ltd

Longmont, CO 80501

info@cfh.ltd

(303) 415-2516

Lic. #

Sample: 2006DBL0304.6329

METRC Sample:

Strain: Made for EQUILIBRIA

Ordered: 06/29/2020; Sampled: 07/01/2020; Completed: 07/06/2020

CFHCO2062920T50 50mg/mL tincture

Ingestible, Tincture, CO2



Pesticides



Microbials



Mycotoxins



Heavy Metals



Foreign Matter



Solvents

Terpenes

Analyzed by 300.13 GC/FID and GC/MS

0.109 mg/g
Total Terpenes



Compound	LOD mg/g	Mass mg/g	Mass %	Relative Concentration
β-Caryophyllene	0.003	0.047	0.0047	
α-Bisabolol	0.003	0.021	0.0021	
α-Humulene	0.003	0.017	0.0017	
Guaiol	0.003	0.006	0.0006	
Linalool	0.003	0.005	0.0005	
Caryophyllene Oxide	0.003	0.005	0.0005	
cis-Nerolidol	0.002	0.004	0.0004	
Isopulegol	0.003	0.003	0.0003	
α-Pinene	0.003	<LOD	<LOD	
α-Terpinene	0.003	<LOD	<LOD	
β-Myrcene	0.003	<LOD	<LOD	
β-Pinene	0.003	<LOD	<LOD	
Camphene	0.003	<LOD	<LOD	
cis-Ocimene	0.002	<LOD	<LOD	
δ-3-Carene	0.003	<LOD	<LOD	
δ-Limonene	0.003	<LOD	<LOD	
Eucalyptol	0.003	<LOD	<LOD	
γ-Terpinene	0.003	<LOD	<LOD	
p-Cymene	0.003	<LOD	<LOD	
Terpinolene	0.003	<LOD	<LOD	
trans-Nerolidol	0.001	<LOD	<LOD	
trans-Ocimene	0.001	<LOD	<LOD	

Cannabinoid Relative Concentration

Analyzed by 300.18 UHPLC/PDA

1.812 mg/g
Δ9-THC + Δ8-THC

61.807 mg/g
CBD

68.002 mg/g
Total Cannabinoids

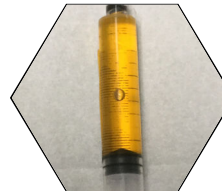
Not Tested

pH: NT
Aw: NT

Not Tested
Homogeneity

Compound	LOD mg/g	Mass mg/g	Mass %	Relative Concentration
CBC	0.015	2.189	0.2189	
CBCa	0.015	<LOD	<LOD	
CBD	0.015	61.807	6.1807	
CBDa	0.015	0.339	0.0339	
CBDV	0.015	0.677	0.0677	
CBDVa	0.015	<LOD	<LOD	
CBG	0.015	1.116	0.1116	
CBGa	0.015	<LOD	<LOD	
CBL	0.015	<LOD	<LOD	
CBN	0.015	0.063	0.0063	
Δ8-THC	0.015	<LOD	<LOD	
Δ9-THC	0.015	1.812	0.1812	
THCa	0.015	<LOD	<LOD	
THCV	0.015	<LOD	<LOD	
THCVa	0.015	<LOD	<LOD	

Total THC = 0.877 x THC-A + Δ9-THC + Δ8-THC; Total CBD = CBDa * 0.877 + CBD



Stacy Gardalen

Stacy Gardalen
Quality Control

Glen Marquez

Glen Marquez
Quality Control



4439 Polaris Ave
Las Vegas, NV

(702) 728-5180

www.dblabslv.com

This report is considered highly confidential and the sole property of the customer. DB Labs will not discuss any part of this study with personnel other than those authorized by the client. The results described in this report only apply to the samples analyzed. The reported result is based on a sample weight with the applicable moisture content for that sample. LOQ = Limit of Quantitation. Pesticide LOQ = Instrument Limit of Quantitation, NA = Not Analyzed, ND = Not Detected, NR = Not Reported, NT = Not Tested. PGR = Plant Growth Regulator. Unless otherwise stated all quality control samples performed within specifications established by the Laboratory. This product has been tested by DB Labs, LLC (MME# 61887736101164525768) using valid testing methodologies and a quality system as required by Nevada state law. Edibles are picked up prior to final packaging unless otherwise stated. Values reported relate only to the product tested. The uncertainty of measurement associated with the measurement result reported in this certificate is available from the organization upon request. DB Labs makes no claims as to the efficacy, safety or other risks associated with any detected or non-detected levels of any compounds reported herein. This Certificate shall not be reproduced except in full, without the written approval of DB Labs.



Certificate of Analysis

Powered by Confident Cannabis

CFH, Ltd

Longmont, CO 80501

info@cfh.ltd

(303) 415-2516

Lic. #

Sample: 2006DBL0304.6329

METRC Sample:

Strain: Made for EQUILIBRIA

Ordered: 06/29/2020; Sampled: 07/01/2020; Completed: 07/06/2020

CFHCO2062920T50 50mg/mL tincture

Ingestible, Tincture, CO2



Pesticides

Analyzed by 300.9 LC/MS/MS and GC/MS/MS

Pass

Compound	LOQ	Limit	Mass	Status
	PPB	PPB	PPB	
Abamectin	10	200	<LOQ	Pass
Acequinocyl	10	4000	<LOQ	Pass
Bifenazate	10	400	<LOQ	Pass
Bifenthrin	10	100	<LOQ	Pass
Cyfluthrin	10	2000	<LOQ	Pass
Cypermethrin	10	1000	<LOQ	Pass
Daminozide	10	800	<LOQ	Pass
Dimethomorph	10	2000	<LOQ	Pass
Etoxazole	10	400	<LOQ	Pass
Fenhexamid	10	1000	<LOQ	Pass
Flonicamid	10	1000	<LOQ	Pass
Fludioxonil	10	500	<LOQ	Pass
Imidacloprid	10	500	<LOQ	Pass
Myclobutanil	10	400	<LOQ	Pass
Pacllobutrazol	10	400	<LOQ	Pass
Piperonyl Butoxide	10	3000	<LOQ	Pass
Pyrethrins	10	2000	<LOQ	Pass
Quintozene	10	800	<LOQ	Pass
Spinetoram	10	1000	<LOQ	Pass
Spinosad	10	1000	<LOQ	Pass
Spirotetramat	10	1000	<LOQ	Pass
Thiamethoxam	10	400	<LOQ	Pass
Trifloxystrobin	10	1000	<LOQ	Pass
Plant Growth Regulators	10	50	<LOQ	Pass

Microbials

Analyzed by 300.1 Plating/QPCR

Pass

Quantitative Analysis	LOQ	Limit	Mass	Status
	CFU/g	CFU/g	CFU/g	
Aerobic Bacteria	900	100000	<LOQ	Pass
Bile-Tolerant Gram-Negative Bacteria	90	1000	<LOQ	Pass
Coliforms	90	1000	<LOQ	Pass
Yeast & Mold	90	10000	<LOQ	Pass
Qualitative Analysis	Detected or Not Detected			Status
E. Coli	Not Detected			Pass
Salmonella	Not Detected			Pass

Mycotoxins

Analyzed by 300.2 Elisa

Pass

Mycotoxin	LOQ	Limit	Mass	Status
	PPB	PPB	PPB	
Aflatoxins	4.0	20.0	<LOQ	Pass
Ochratoxin A	2.0	20.0	3.0	Pass

Heavy Metals

Analyzed by 300.8 ICP/MS

Pass

Element	LOQ	Limit	Mass	Status
	PPB	PPB	PPB	
Arsenic	38	2000	<LOQ	Pass
Cadmium	38	820	<LOQ	Pass
Lead	38	1200	<LOQ	Pass
Mercury	38	400	<LOQ	Pass

Residual Solvents

Analyzed by 300.13 GC/FID and GC/MS

Pass

Compound	LOQ	Limit	Mass	Status
	PPM	PPM	PPM	
Butanes	60	500	<LOQ	Pass
Ethanol	60		<LOQ	Tested
Heptanes	60	500	<LOQ	Pass
Propane	60	500	<LOQ	Pass



Stacy Gardalen

Stacy Gardalen
Quality Control

Glen Marquez

Glen Marquez
Quality Control



4439 Polaris Ave
Las Vegas, NV

(702) 728-5180

www.dblabslv.com

This report is considered highly confidential and the sole property of the customer. DB Labs will not discuss any part of this study with personnel other than those authorized by the client. The results described in this report only apply to the samples analyzed. The reported result is based on a sample weight with the applicable moisture content for that sample. LOQ = Limit of Quantitation. Pesticide LOQ = Instrument Limit of Quantitation. NA = Not Analyzed. ND = Not Detected. NR = Not Reported. NT = Not Tested. PGR = Plant Growth Regulator. Unless otherwise stated all quality control samples performed within specifications established by the Laboratory. This product has been tested by DB Labs, LLC (MME# 61887736101164525768) using valid testing methodologies and a quality system as required by Nevada state law. Edibles are picked up prior to final packaging unless otherwise stated. Values reported relate only to the product tested. The uncertainty of measurement associated with the measurement result reported in this certificate is available from the organization upon request. DB Labs makes no claims as to the efficacy, safety or other risks associated with any detected or non-detected levels of any compounds reported herein. This Certificate shall not be reproduced except in full, without the written approval of DB Labs.