



Certificate of Analysis

Powered by Confident Cannabis

CFH, Ltd

Longmont, CO 80501

info@cfh.ltd

(303) 415-2516

Lic. #

Sample: 2108DBL0369.8903

METRC Sample:

Strain: MADE FOR EQUILIBRIA

Ordered: 08/31/2021; Sampled: 09/07/2021; Completed: 09/09/2021

T10M-0001

Ingestible, Tincture, CO2



Pesticides



Microbials



Mycotoxins



Heavy Metals



Foreign Matter



Solvents

Terpenes

Analyzed by 300.13 GC/FID and GC/MS

0.137 mg/g
Total Terpenes



Compound	LOD mg/g	Mass mg/g	Mass %	Relative Concentration
Caryophyllene Oxide	0.025	0.059	0.0059	<div style="width: 100%;"></div>
Eucalyptol	0.025	0.039	0.0039	<div style="width: 75%;"></div>
β-Caryophyllene	0.025	0.039	0.0039	<div style="width: 75%;"></div>
α-Bisabolol	0.025	<LOD	<LOD	<div style="width: 0%;"></div>
α-Humulene	0.025	<LOD	<LOD	<div style="width: 0%;"></div>
α-Pinene	0.025	<LOD	<LOD	<div style="width: 0%;"></div>
α-Terpinene	0.025	<LOD	<LOD	<div style="width: 0%;"></div>
β-Myrcene	0.025	<LOD	<LOD	<div style="width: 0%;"></div>
β-Pinene	0.025	<LOD	<LOD	<div style="width: 0%;"></div>
Camphene	0.025	<LOD	<LOD	<div style="width: 0%;"></div>
cis-Nerolidol	0.016	<LOD	<LOD	<div style="width: 0%;"></div>
cis-Ocimene	0.016	<LOD	<LOD	<div style="width: 0%;"></div>
δ-3-Carene	0.025	<LOD	<LOD	<div style="width: 0%;"></div>
δ-Limonene	0.025	<LOD	<LOD	<div style="width: 0%;"></div>
γ-Terpinene	0.025	<LOD	<LOD	<div style="width: 0%;"></div>
Geraniol	0.025	<LOD	<LOD	<div style="width: 0%;"></div>
Guaiol	0.025	<LOD	<LOD	<div style="width: 0%;"></div>
Isopulegol	0.025	<LOD	<LOD	<div style="width: 0%;"></div>
Linalool	0.025	<LOD	<LOD	<div style="width: 0%;"></div>
p-Cymene	0.025	<LOD	<LOD	<div style="width: 0%;"></div>
Terpinolene	0.025	<LOD	<LOD	<div style="width: 0%;"></div>
trans-Nerolidol	0.009	<LOD	<LOD	<div style="width: 0%;"></div>
trans-Ocimene	0.009	<LOD	<LOD	<div style="width: 0%;"></div>

Cannabinoid Relative Concentration

Analyzed by 300.18 UHPLC/PDA

0.285 mg/g
Δ9-THC + Δ8-THC

11.162 mg/g
CBD

Not Tested

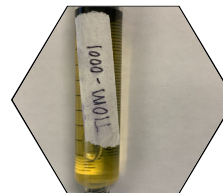
pH: NT
Aw: NT

13.393 mg/g
Total Cannabinoids

Not Tested
Homogeneity

Compound	LOD mg/g	Mass mg/g	Mass %	Relative Concentration
CBC	0.013	0.355	0.0355	<div style="width: 10%;"></div>
CBCa	0.013	<LOD	<LOD	<div style="width: 0%;"></div>
CBD	0.013	11.162	1.1162	<div style="width: 100%;"></div>
CBDa	0.013	0.117	0.0117	<div style="width: 1%;"></div>
CBDV	0.013	1.217	0.1217	<div style="width: 10%;"></div>
CBDVa	0.013	<LOD	<LOD	<div style="width: 0%;"></div>
CBG	0.013	0.178	0.0178	<div style="width: 1%;"></div>
CBGa	0.013	<LOD	<LOD	<div style="width: 0%;"></div>
CBL	0.013	0.021	0.0021	<div style="width: 0%;"></div>
CBN	0.013	<LOD	<LOD	<div style="width: 0%;"></div>
Δ8-THC	0.013	<LOD	<LOD	<div style="width: 0%;"></div>
Δ9-THC	0.013	0.285	0.0285	<div style="width: 10%;"></div>
THCa	0.013	<LOD	<LOD	<div style="width: 0%;"></div>
THCV	0.013	0.057	0.0057	<div style="width: 0%;"></div>
THCVa	0.013	<LOD	<LOD	<div style="width: 0%;"></div>

Total THC = 0.877 x THC-A + Δ9-THC + Δ8-THC; Total CBD = CBDa * 0.877 + CBD



Benjamin G.M. Chew, Ph.D.
Benjamin G.M. Chew, Ph.D.
Laboratory Director

Glen Marquez
Glen Marquez
Quality Control

This report is considered highly confidential and the sole property of the customer. DB Labs will not discuss any part of this study with personnel other than those authorized by the client. The results described in this report only apply to the samples analyzed. The reported result is based on a sample weight with the applicable moisture content for that sample. LOQ = Limit of Quantitation. Pesticide LOQ = Instrument Limit of Quantitation, NA = Not Analyzed, ND = Not Detected, NR = Not Reported, NT = Not Tested. PGR = Plant Growth Regulator. Unless otherwise stated all quality control samples performed within specifications established by the Laboratory. This product has been tested by DB Labs, LLC (MME# 61887736101164525768) using valid testing methodologies and a quality system as required by Nevada state law. Edibles are picked up prior to final packaging unless otherwise stated. Values reported relate only to the product tested. The uncertainty of measurement associated with the measurement result reported in this certificate is available from the organization upon request. DB Labs makes no claims as to the efficacy, safety or other risks associated with any detected or non-detected levels of any compounds reported herein. This Certificate shall not be reproduced except in full, without the written approval of DB Labs.



4439 Polaris Ave
Las Vegas, NV

(702) 728-5180

www.dblabslv.com



Certificate of Analysis

Powered by Confident Cannabis

CFH, Ltd

Longmont, CO 80501
 info@cfh.ltd
 (303) 415-2516
 Lic. #

Sample: 2108DBL0369.8903
 METRC Sample:

Strain: MADE FOR EQUILIBRIA
 Ordered: 08/31/2021; Sampled: 09/07/2021; Completed: 09/09/2021

T10M-0001

Ingestible, Tincture, CO2



Pesticides		Pass		
Analyzed by 300.9 LC/MS/MS and GC/MS/MS				
Compound	LOQ	Limit	Mass	Status
	PPB	PPB	PPB	
Abamectin	10	200	<LOQ	Pass
Acequinocyl	10	4000	<LOQ	Pass
Bifenazate	10	400	<LOQ	Pass
Bifenthrin	10	100	<LOQ	Pass
Cyfluthrin	10	2000	<LOQ	Pass
Cypermethrin	10	1000	<LOQ	Pass
Daminozide	10	800	<LOQ	Pass
Dimethomorph	10	2000	<LOQ	Pass
Etoazole	10	400	<LOQ	Pass
Fenhexamid	10	1000	<LOQ	Pass
Flonicamid	10	1000	<LOQ	Pass
Fludioxonil	10	500	<LOQ	Pass
Imidacloprid	10	500	<LOQ	Pass
Myclobutanil	10	400	<LOQ	Pass
Pacllobutrazol	10	400	<LOQ	Pass
Piperonyl Butoxide	10	3000	<LOQ	Pass
Pyrethrins	10	2000	<LOQ	Pass
Quintozene	10	800	<LOQ	Pass
Spinetoram	10	1000	<LOQ	Pass
Spinosad	10	1000	<LOQ	Pass
Spirotetramat	10	1000	<LOQ	Pass
Thiamethoxam	10	400	<LOQ	Pass
Trifloxystrobin	10	1000	<LOQ	Pass
Plant Growth Regulators	10	50	<LOQ	Pass

Microbials		Pass		
Analyzed by 300.1 Plating/QPCR				
Quantitative Analysis	LOQ	Limit	Mass	Status
	CFU/g	CFU/g	CFU/g	
Aerobic Bacteria	900	100000	<LOQ	Pass
Bile-Tolerant Gram-Negative Bacteria	90	1000	<LOQ	Pass
Qualitative Analysis	Detected or Not Detected			Status
E. Coli	Not Detected			Pass
Salmonella	Not Detected			Pass

Mycotoxins		Pass		
Analyzed by 300.2 Elisa				
Mycotoxin	LOQ	Limit	Mass	Status
	PPB	PPB	PPB	
Aflatoxins	4.0	20.0	<LOQ	Pass
Ochratoxin A	2.0	20.0	13.5	Pass

Heavy Metals		Pass		
Analyzed by 300.8 ICP/MS				
Element	LOQ	Limit	Mass	Status
	PPB	PPB	PPB	
Arsenic	48	2000	<LOQ	Pass
Cadmium	48	820	<LOQ	Pass
Lead	48	1200	63	Pass
Mercury	48	400	<LOQ	Pass

Residual Solvents		Pass		
Analyzed by 300.13 GC/FID and GC/MS				
Compound	LOQ	Limit	Mass	Status
	PPM	PPM	PPM	
Butanes	53	500	<LOQ	Pass
Ethanol	53		<LOQ	Tested
Heptanes	53	500	<LOQ	Pass
Propane	53	500	<LOQ	Pass



Benjamin G.M. Chew
 Benjamin G.M. Chew, Ph.D.
 Laboratory Director

Glen Marquez
 Glen Marquez
 Quality Control



4439 Polaris Ave
 Las Vegas, NV
 (702) 728-5180
 www.dblabslv.com

This report is considered highly confidential and the sole property of the customer. DB Labs will not discuss any part of this study with personnel other than those authorized by the client. The results described in this report only apply to the samples analyzed. The reported result is based on a sample weight with the applicable moisture content for that sample. LOQ = Limit of Quantitation. Pesticide LOQ = Instrument Limit of Quantitation, NA = Not Analyzed, ND = Not Detected, NR = Not Reported, NT = Not Tested. PGR = Plant Growth Regulator. Unless otherwise stated all quality control samples performed within specifications established by the Laboratory. This product has been tested by DB Labs, LLC (MME# 61887736101164525768) using valid testing methodologies and a quality system as required by Nevada state law. Edibles are picked up prior to final packaging unless otherwise stated. Values reported relate only to the product tested. The uncertainty of measurement associated with the measurement result reported in this certificate is available from the organization upon request. DB Labs makes no claims as to the efficacy, safety or other risks associated with any detected or non-detected levels of any compounds reported herein. This Certificate shall not be reproduced except in full, without the written approval of DB Labs.